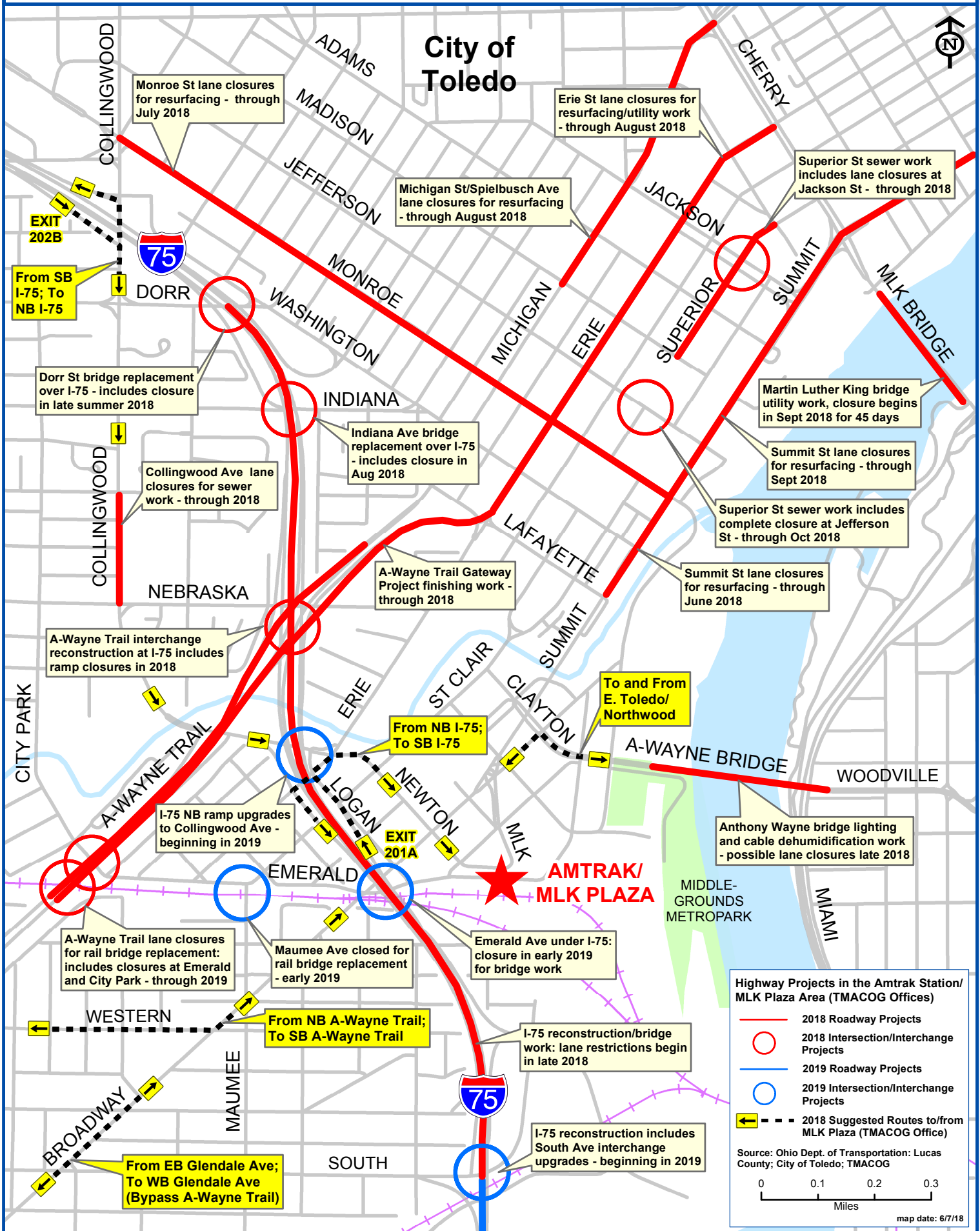


HIGHWAY PROJECTS IN THE AMTRAK STATION/ MLK PLAZA AREA: 2018-19



Monroe St lane closures for resurfacing - through July 2018

Erie St lane closures for resurfacing/utility work - through August 2018

Superior St sewer work includes lane closures at Jackson St - through 2018

Michigan St/Spielbusch Ave lane closures for resurfacing - through August 2018

EXIT 202B

From SB I-75; To NB I-75

Dorr St bridge replacement over I-75 - includes closure in late summer 2018

Martin Luther King bridge utility work, closure begins in Sept 2018 for 45 days

Collingwood Ave lane closures for sewer work - through 2018

Indiana Ave bridge replacement over I-75 - includes closure in Aug 2018

Summit St lane closures for resurfacing - through Sept 2018

Superior St sewer work includes complete closure at Jefferson St - through Oct 2018

A-Wayne Trail Gateway Project finishing work - through 2018

Summit St lane closures for resurfacing - through June 2018

A-Wayne Trail interchange reconstruction at I-75 includes ramp closures in 2018

From NB I-75; To SB I-75

To and From E. Toledo/Northwood

I-75 NB ramp upgrades to Collingwood Ave - beginning in 2019

EXIT 201A

Anthony Wayne bridge lighting and cable dehumidification work - possible lane closures late 2018

A-Wayne Trail lane closures for rail bridge replacement: includes closures at Emerald and City Park - through 2019

Maumee Ave closed for rail bridge replacement - early 2019

Emerald Ave under I-75: closure in early 2019 for bridge work

From NB A-Wayne Trail; To SB A-Wayne Trail

I-75 reconstruction/bridge work: lane restrictions begin in late 2018

WESTERN

From EB Glendale Ave; To WB Glendale Ave (Bypass A-Wayne Trail)

I-75 reconstruction includes South Ave interchange upgrades - beginning in 2019